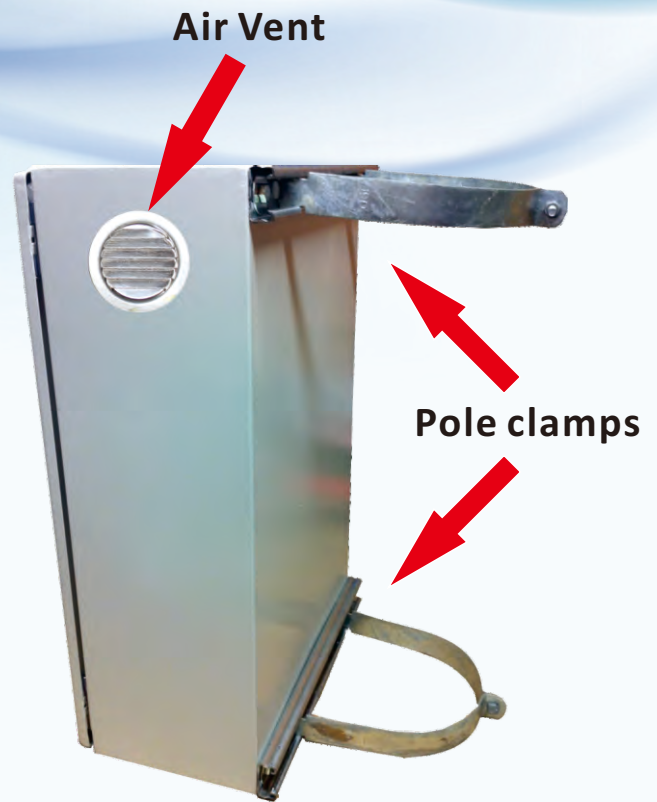


Compact Enclosures

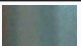



Features

- Multi-folded periphery to ensure a reliable seal
- IP66 or IP55 Rated
- Welded frame for structural strength
- Polyurethane gasket around entire door
- Door can be hinged on left or right
- Door opens 110 degrees with standard hinge
- Adjustable mounting plate
- Sealed gland plate
- Supplied with mounting holes on rear
- Optional key locks/pole clamps/air vents



Material and Finishing

Item	Material & Size	Finish	Colour
Mounting Plate	2.5mm SPCC cold rolled steel	Aluminized zinc	Zinc 
Door and Body	1.5mm SPCC cold rolled steel	Powder coated	RAL7035 

Protection and Size

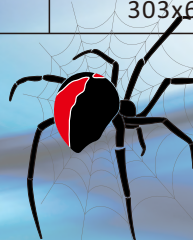
Complies with IEC60529 and EN60529/10.91

Model	Width (mm)	Depth (mm)	Height (mm)	Gland Plate Size(mm)	IP	Lock(s)	Packing(mm)
GB.1033	300	210	300	233x45	IP66	1	330x240x330
GB.1034	300	210	400	233x45	IP66	1	330x240x430
GB.1038	380	210	600	303x63	IP55	2	410x240x630
GB.2025	200	120	250	133x43	IP66	1	230x150x280
GB.2530	250	200	300	133x43	IP66	1	280x230x330
GB.6080	600	210	800	303x63	IP55	2	630x240x830

Specifications are subject to change without prior notice.



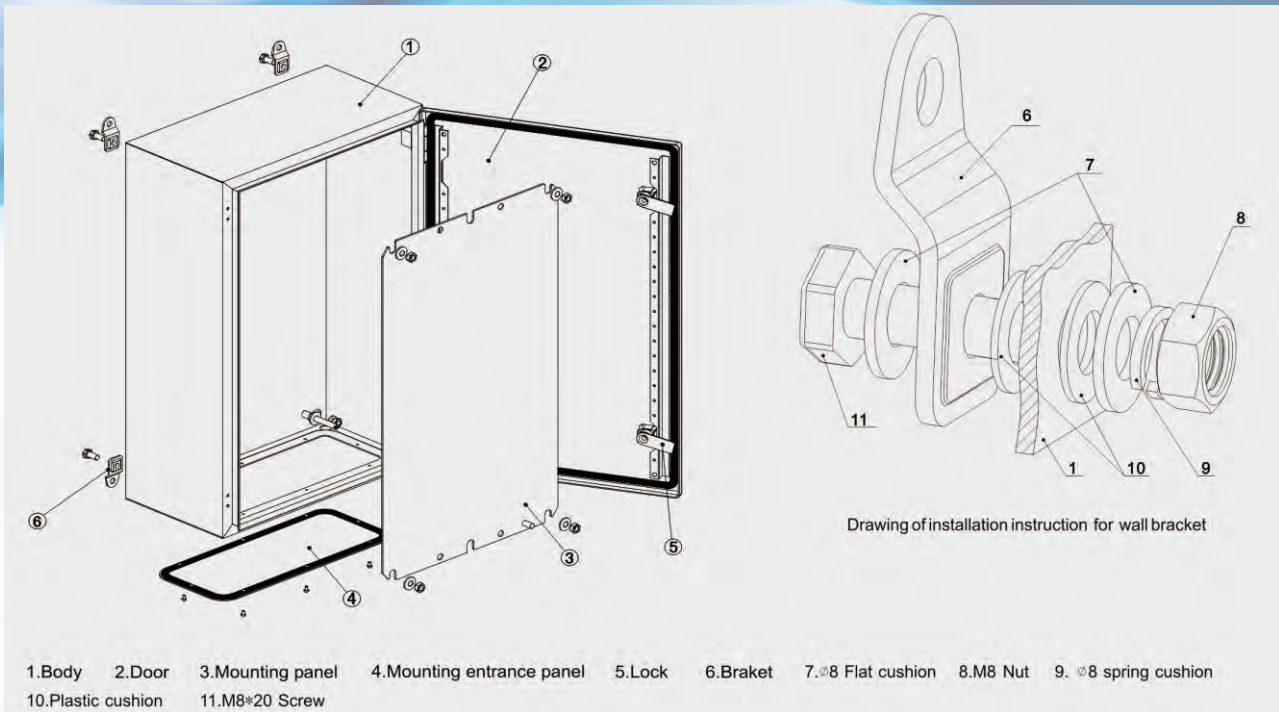
Power Systems Solutions



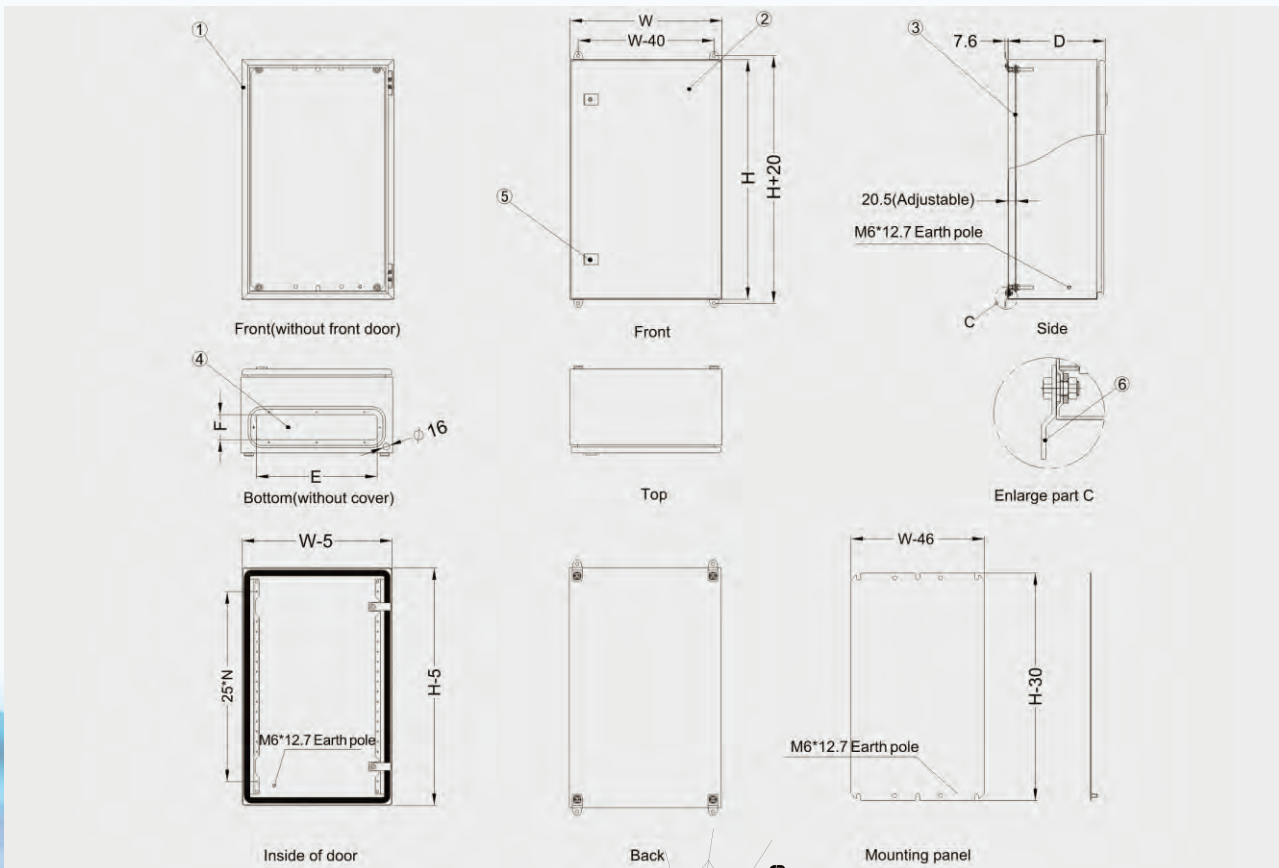
**REDBACK
RACKS**

Compact Enclosures

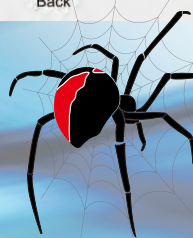
Main Structure



Cabinet Dimensions



Power Systems Solutions



REDBACK
RACKS